



## FY23 DE Coast Nourishment Rehoboth – Dewey – Bethany – S. Bethany & Fenwick Is. WEEKLY PROGRESS MEETING #13 Agenda

**USACE Contract:** Contract No. W912BU23C0002

**WMI Contract #:** 13220115

**Date/Time & Loc:** 01 June 2023 @ 1000 hrs., Rehoboth Municipal Complex, 2<sup>nd</sup> floor Caucus Room  
229 Rehoboth Ave. Rehoboth Beach, DE 19971

**Join Microsoft Teams Meeting:** Meeting ID: 243 690 532 190 Passcode: 3uiSyB

**Principle Attendees:**

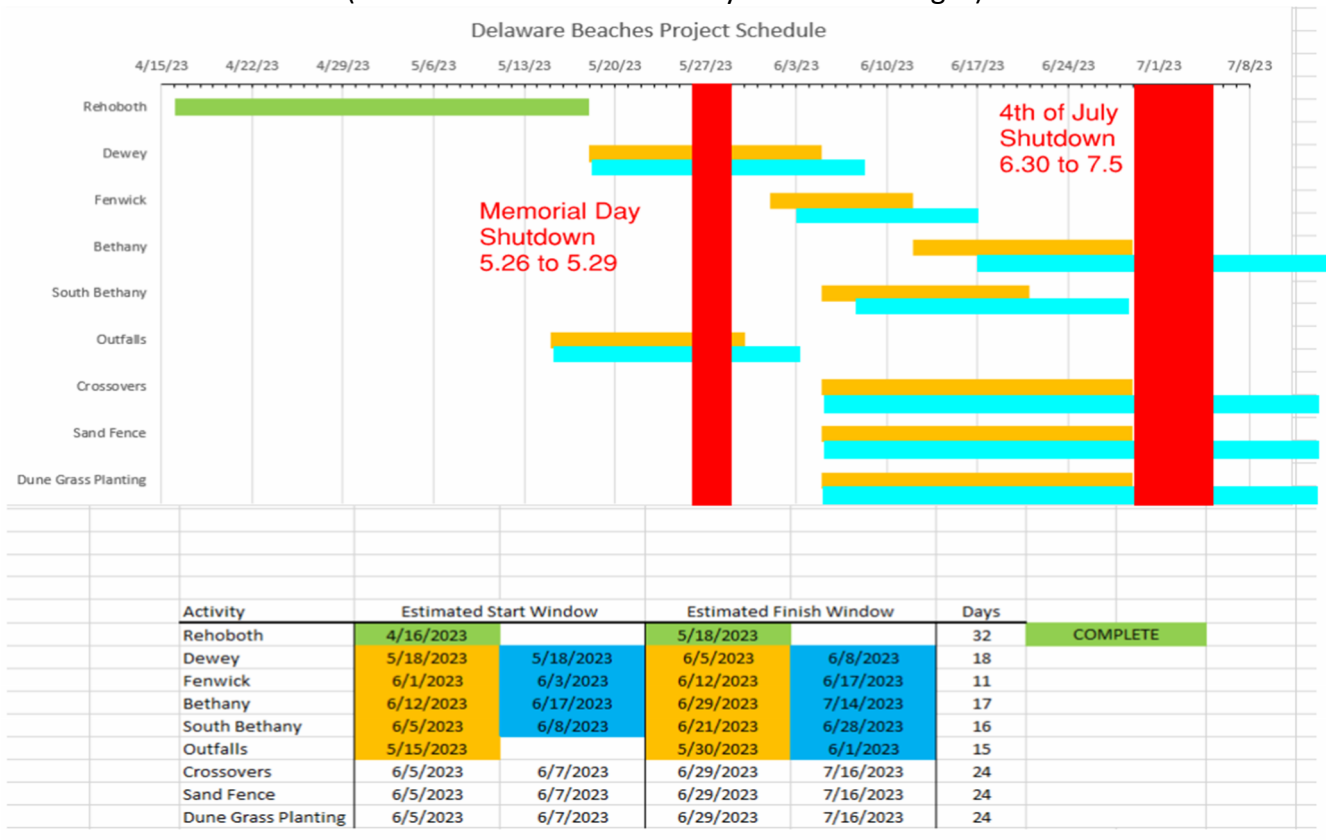
USACE, WMI, Rehoboth/Dewey/Bethany/South Bethany/Fenwick Officials, DNREC, ER&M, Walters, Tide, Seismic, OHI

**Sign-in Sheet:** Has everyone present signed in? Who is on the call? (Record Names)

**Updated Dredge Schedule:**

- BE went off site 5.25.23. Will not return.
- Mag returned to work after the Holiday shutdown/weather on 5.31.23. Currently in harbor at Lewes repairing the jet pumps.
- RB arrived at job site on 5.31.23. Currently in harbor at Lewes removing Crewboat from dredge and crew change.

(USACE will be notified on any schedule changes)



### **Action Items since previous progress meeting:**

- RFI – 0003 is in review by USACE.
- RFP – 0004 is in review by USACE.

### **Mobilization**

- Mob of Fenwick Island completed
  - State made WMI aware no more equipment can be moved through this access.
  - Damage to asphalt directly in front on vehicular beach access at north end of parking lot. Weeks will work with the state to coordinate payment for repairs
  - Fenwick Access (Southern project limits) will be used for Port-o-lets and fuel.
  - Any additional equipment will be mobilization through S. Bethany access.
    - WMI reached out to Scott with the parks, and he is aware equipment will be delivered to the staging area.
    - Mats have been put in place and a D6 dozer is being delivered today 6/1
    - Equipment will continue to be delivered this week and into next to mobilize for South Bethany start up.

### **Survey**

- **Rehoboth Beach**
  - All surveys have been accepted by USACE.
  - Rehoboth final quantity: 275,738 cys
- **Dewey Beach**
  - BD's to date: Sta. 134+00 to 169+23
  - AD's to date: Sta. 152+00 to 169+23
    - Pad 147+00 -151+00
  - Current BD volume 184,963 yd<sup>3</sup>
    - New BDs taken 5/31 and 6/1 and this number will be updated
  - Current AD Volume to Date: 120,173 yd<sup>3</sup>
- **Fenwick Beach**
  - Sta. 00+00 to 55+00
    - Currently working on new BDs 00+00 to 30+00 topo only.
    - Weather preventing wade and hydro.
  - Current BD volume: 210,926 yd<sup>3</sup>

### **Beachfill & Dredging**

- **Rehoboth Beach:**
  - Subline Landing: 47+50
    - Anticipated removal on 6.2.23 weather pending
    - This line will be put in place in South Bethany on 6/2
- **Dewey Beach:**
  - Subline is laid at Sta 150+75. – Currently discharging North
  - Discharge Location: Top: 149+70 & Bottom: 150+25
  - Beach Access Closures: Read and Collins Ave.
  - BE Loads to Date (as of 7am): 24
  - RN Loads to Date (as of 7am): 2

- MAG Loads to Date (as of 7am): 27
- Total Loads Delivered to Date: 53

➤ **Fenwick Island beach:**

- Subline is laid at Sta. 27+50. – Will discharge South first.
- Line was repaired and tested. Ready for operations after the Holiday.

**Crossovers**

- RFI-0004 was submitted regarding number of compaction test. In review by USACE
- **Preparatory Phase:**
  - Prep Meeting: will be held Monday @ 10:00 at Rehoboth staging area.
  - Crossover work will begin on after the prep meeting.
  - Will start in north and work their way south.

**Outfalls**

- WMI and Walters continue to ensure all outfalls/groins are protected with minimum of 5.0' of coverage.
- WMI and Walters continue to maintain the outfalls ends and ensure they are flowing.
- Walters completed VA. Ave. outfall 5.19.23
  - Repairs to this outfall were made on 5.31.23.
- Walters is currently conducting operations at the MD Ave outfall

**Structure Monitoring**

- Monitors are in place and collecting data in Fenwick, Dewey, and Rehoboth beaches.

**Environmental Concerns**

- Bird monitoring surveys being conducted daily in Dewey and Fenwick
- No sighting of piping plovers to date. All Reports being submitted daily with QC report.
- Dredge Drag heads are being inspected after every load. No MEC or Endangered wildlife reported to date.

**OHI (MEC)**

- OHI (MEC) Techs are onsite, working 3-8hr our shifts, conducting 24-hour coverage on both sites.

**Sand Fence, Dune Grass Planting, Demob**

- **Preparatory Phase:**
  - Prep Meeting: TBD

**Site Safety**

- Inspections for the month of May are at 100%
- Security at both locations 24hrs.
  - WMI will check all staging areas over the holiday to ensure security fence is intact.
- STDL is up to date. There are no deficiencies.

**Discuss other business, as appropriate:**

- Parking Bethany
- Repairs to broken fence post in Rehoboth staging area will be made before Walters departs jobsite.